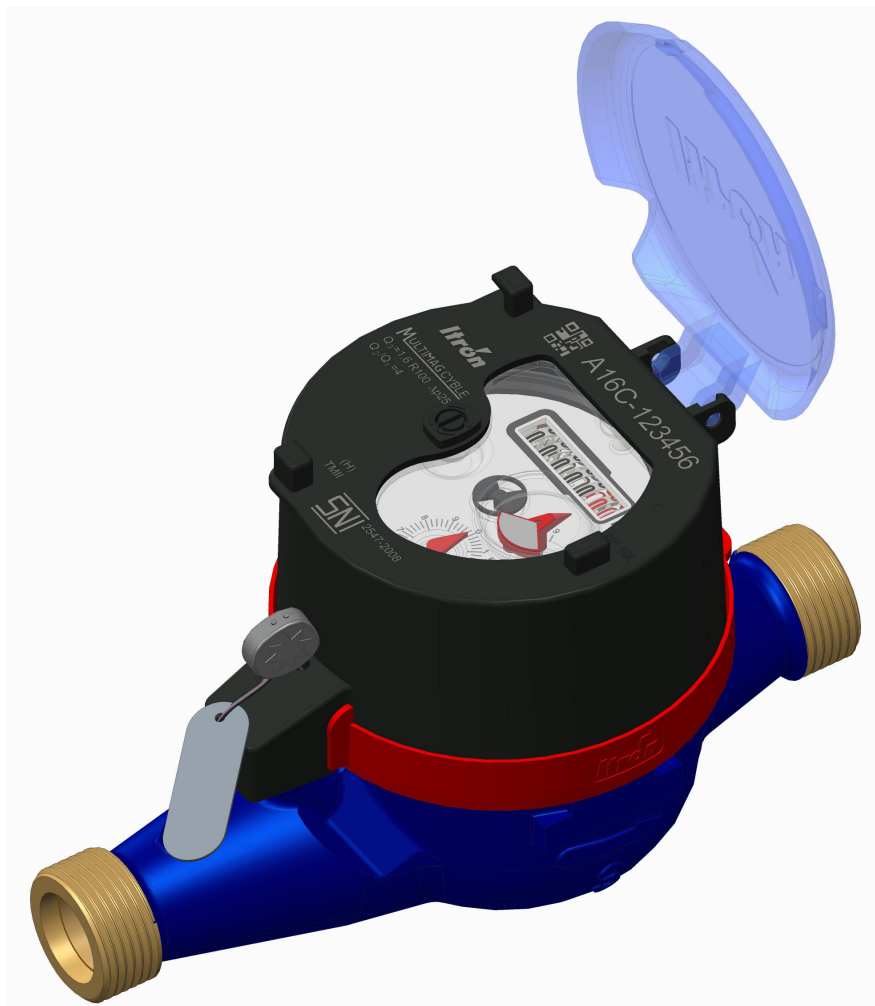
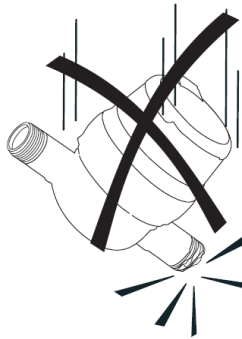


# Multimag TM II

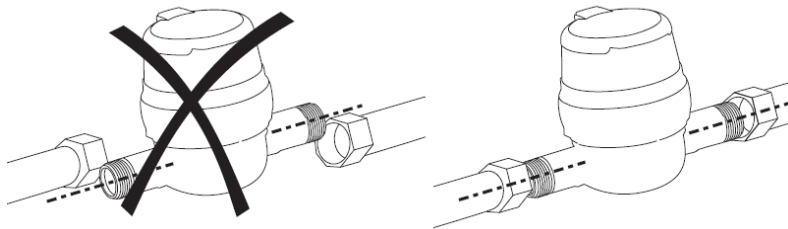
Installation Instructions

DN15 – DN40

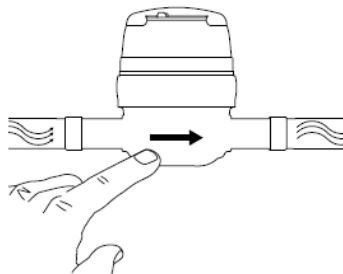




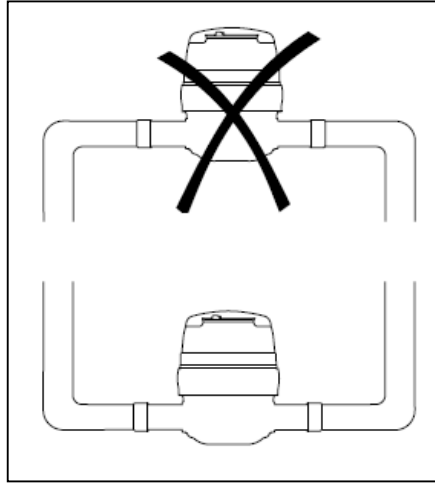
**HANDLE CAREFULLY**  
Shocks and hits can damage the threads  
and the accuracy of the meter too



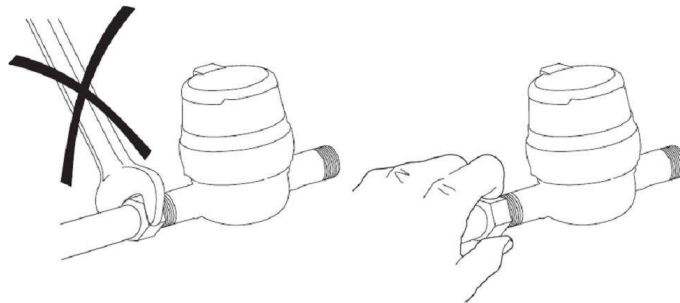
**INSTALL ON FLEXIBLE PIPING**  
If the piping is too rigid, verify its alignment



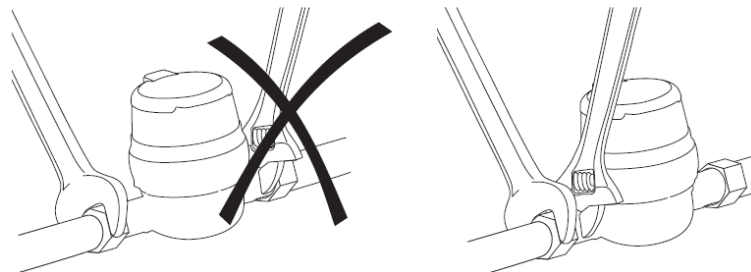
**FLOW DIRECTION**  
the arrow in the direction of water flow



**KEEP THE WATER METER ON LOWER POSITION**  
To make sure the water always in inside of water meter  
(easy to remove the air from inside of water meter)



**START MANUALLY THE SCREWING**  
Do not force with the key before the nut is sufficiently screwed manual



**KEY POSITION ON TIGHTENING**  
Apply the second key on the flat surface close to the thread to avoid any torsion on the meter  
Tighten the coupling nut with torsion:

- Rubber washer : 30 Nm
- Fiber washer : 25 Nm