

# Itron Prepayment Management Platform

**Itron is a world-leading technology and services company dedicated to the resourceful use of energy and water.**

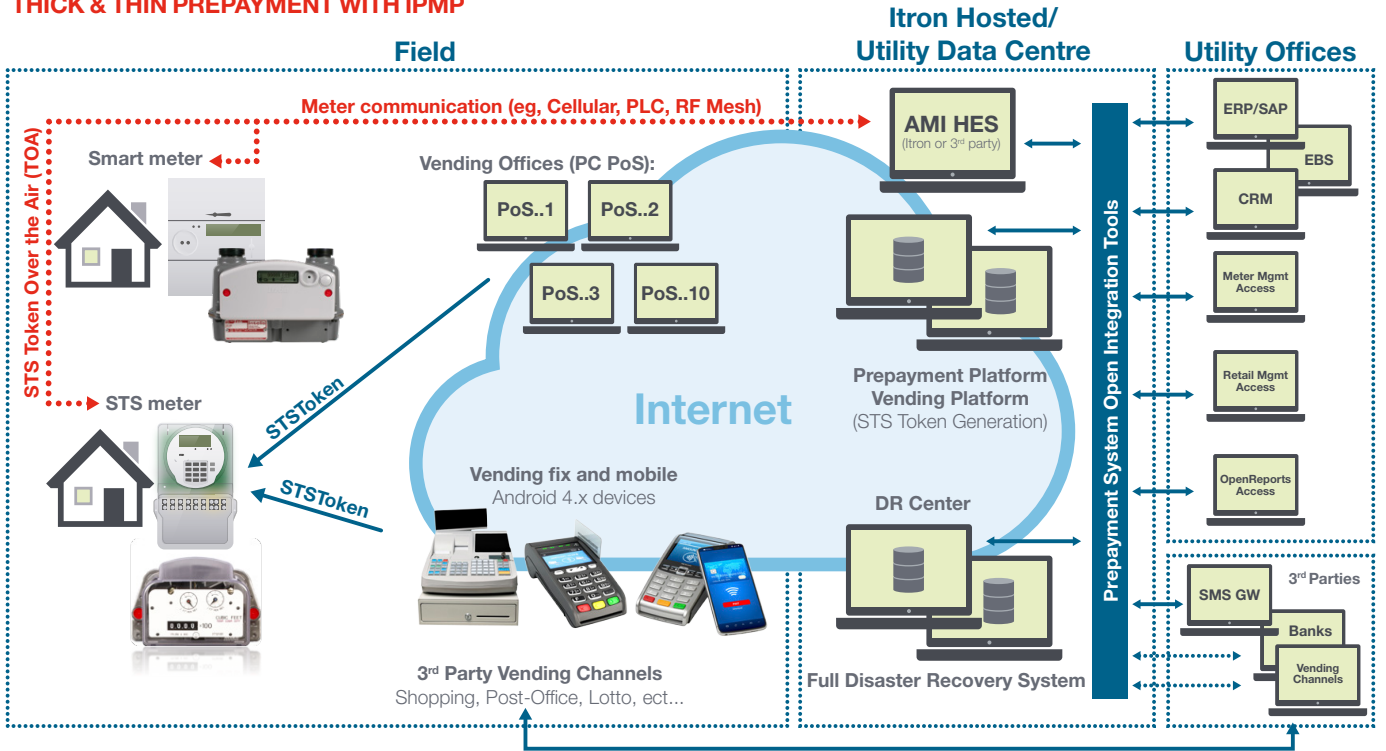
We provide comprehensive solutions that measure, manage and analyze energy and water.

Itron has been actively involved in the supply, management and operation of comprehensive Prepayment Metering solutions across all continents for many years. This diverse experience, ranging from remote rural to urbanized environments, has allowed Itron to develop solutions to unique operational challenges and revenue protection issues.

Itron has a long and proud history in the prepayment industry. Itron is a founding member of the Standard Transfer Specification (STS) Association and one of the first companies to receive STS certification for prepayment electricity, gas and water vending in a single product.

Building on the legacy of existing Itron prepayment solutions, the Itron Prepayment Management Platform (IPMP) represents the most advanced prepayment management system for “Thick”, “Thin” and “Hybrid” metering available today and into the future. IPMP is fully multi-commodity and multi-mode, servicing electric, gas and water prepayment for STS, hybrid, thick and thin prepayment carrying the latest STS Edition 2 certification.

**THICK & THIN PREPAYMENT WITH IPMP**



**Thick Prepayment**

The STS as detailed in IEC 62055 is an example of a thick prepayment solution where the prepayment account and control logic for the load switch resides in the meter.

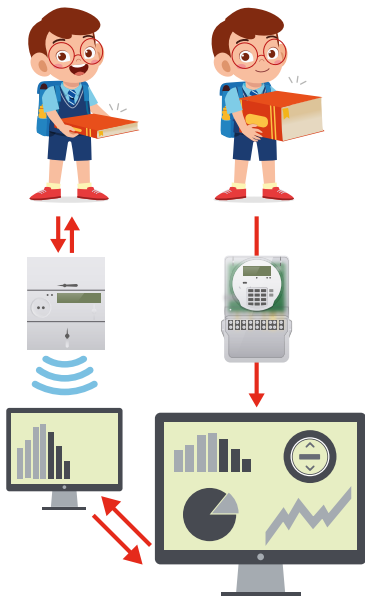
**Thin Prepayment**

In the thin prepayment solution, also referred to as smart prepayment, the prepayment wallet is maintained by IPMP and requires that the meters are AMI-enabled and fitted with load switches. IPMP is integrated into the Itron Head End Systems (HES) and MDMs and also multiple third-party Head End Systems.

**Hybrid Prepayment**

When a thick prepayment meter also has AMI capabilities, it is known as a hybrid meter. In this case, IPMP delivers credit tokens over the air via the HES and can also utilize the AMI channel for load switch control.

In thick, thin and hybrid prepayment solutions, a wide variety of vending channels remain available managed by IPMP.



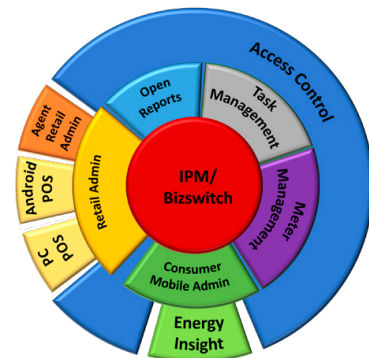
IPMP is typically hosted by Itron and offered as Software as a Service (SaaS). However, IPMP servers can be hosted in the utility data center. In either case, full disaster recovery capability is provided.

The user interface for the configuration, management and control of IPMP is achieved using a web browser.

**The Itron Prepayment Management Platform**

The primary elements of IPMP are:

- » IPM/Bizswitch, Itron Prepayment Manager (IPM), is the hub of the solution and provides the transaction switching and link between the system components. It is also into the IPM that all third-party systems such as SAP and the AMI MDC's integrate.



- » Access Control is used to set password management and role-based access per system user.
- » Meter Management provides asset control, tariff management, customer and usage point definition and linking.
- » Retail Administration provides access and control of all retailers and vending channels.
- » Open Reports provides all the reporting capability for the system. There are numerous predefined reports and additional reports can be created to suit individual business requirements.
- » Consumer Mobile Admin is the control point for the Energy Insight website and mobile application which allows consumers to directly purchase STS credit tokens or top up their thin prepay wallet and, configure the low credit warning level and delivery method when using thin prepayment.

## Itron Payment Channel Management Platform

The Retail Administration and Vending Control elements of IPMP provide Payment Channel Management functionality.

Functionality available to a management/operations team, via the Retail Administration website, includes:

- » Management of users, terminals and prepaid accounts.
- » Terminal Management enables software updates for various terminals.
- » Voucher Management adds new voucher types, formats and suppliers.
- » Pricing Management for discounts for each retailer and token type combination.

Retailer	Type	# Items	Retail Value	Retail Earnings
Sammy's Store	ALL	18	\$600.00	\$12.00
EPC-Own Vending	ALL	10	\$410.00	\$1.77
Ene Page	ALL	23	\$450.00	\$9.30
United	ALL	186	\$3,879.00	\$11.95
Vendor 1	ALL	37	\$439.90	\$9.80
defrost	ALL	31	\$17,361.00	\$348.02
Mennane Store	ALL	4	\$100.00	\$2.00
<b>Totals</b>		<b>309</b>	<b>\$23,193.90</b>	<b>\$411.85</b>

Agent Management assigns sales agents to vendors and automatically calculates the agent's commissions based on sales.

- » Vendor Group Management manages multiple vendors as a group. Designated users of the group have access to their own limited web application to view/manage the vendors in the group.
- » Account Management manages vendors' virtual bank account, including deposit confirmations, transfers and adjustments along with the importing of voucher stock via a secure PGP process where the importer never sees the voucher codes.
- » Reports provide 15 standard reports and as many customized reports as required to meet any management needs.

## Point of Sale Terminal Software

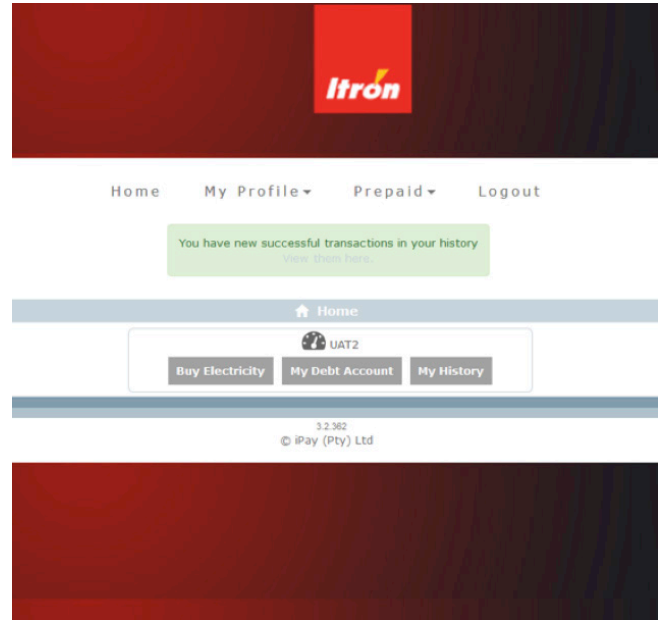
IPMP provides software for point of sale (POS) terminals. In addition to catering for billing and prepaid electricity, gas and water vending, the terminal software together with the IPMP service supports the management of retailers including access control, prepaid electricity/water and gas account management, shift/bank batch management and reporting.

The software is available for PC and Android devices, typically dedicated POS terminals, but also tablets and phones (with support for Bluetooth printers).



## Energy Insight

IPMP's Mobile Consumer website and mobile phone application, available for Android and iOS, allows consumers to purchase prepaid electricity, gas or water and monitor their energy expenditures. Features include the creation of a customer-friendly alias for each prepaid meter, the management of multiple meters and multiple mobile wallets as well as a detailed payment history and consumption history for thin prepayment. In addition, comprehensive customised utility branding is also available.



## Reporting

Relevant, accurate and timely information is a critical component in the management of an efficient vending operation. Therefore, significant effort has gone into the development of an extensive range of reports. System reports can be configured to be emailed automatically to specified recipients or can be drawn directly from the system as and when the need arises. Reports can be exported in various file formats including CSV and Excel for offline processing and analysis.

Reports for the following operational functions are included:

- » Vendor Management
- » Electricity sales
- » Vendor commissions
- » Utility settlements
- » Meter Management

Although the existing reports should meet all general requirements, custom reports can be created if required.



Join us in creating a more **resourceful world**.  
To learn more visit [itron.com](http://itron.com)

While Itron strives to make the content of its marketing materials as timely and accurate as possible, Itron makes no claims, promises, or guarantees about the accuracy, completeness, or adequacy of, and expressly disclaims liability for errors and omissions in, such materials. No warranty of any kind, implied, expressed, or statutory, including but not limited to the warranties of non-infringement of third party rights, title, merchantability, and fitness for a particular purpose, is given with respect to the content of these marketing materials. © Copyright 2023 Itron. All rights reserved. **EL-IPM-03-EN-12.23**

**ITRON METERING SYSTEMS  
SINGAPORE PTE. LTD.**

Novena Square Tower A  
238A Thomson Road, Unit #10-08  
Singapore 307 684

**Phone:** +65 6950 6820  
**Fax :** +65 6443 1345

**ITRON  
FRANCE**

2 Rue de Paris,  
92190 Meudon  
France

**Phone:** +33 1 46 62 23 00