



Eclipse Enterprise Edition

Smart Payment Software for Gas

Utilities are turning more and more to smart payment systems for enhanced revenue management and customer service. Such systems have become a key element in the new strategies utilities are defining to move forward in ever-more deregulated environments. For the end customers, they now have the possibility to control their consumption and access value added services, while the utility optimises its revenues. Eclipse Enterprise Edition has been specifically designed to fit these needs.

KEY BENEFITS

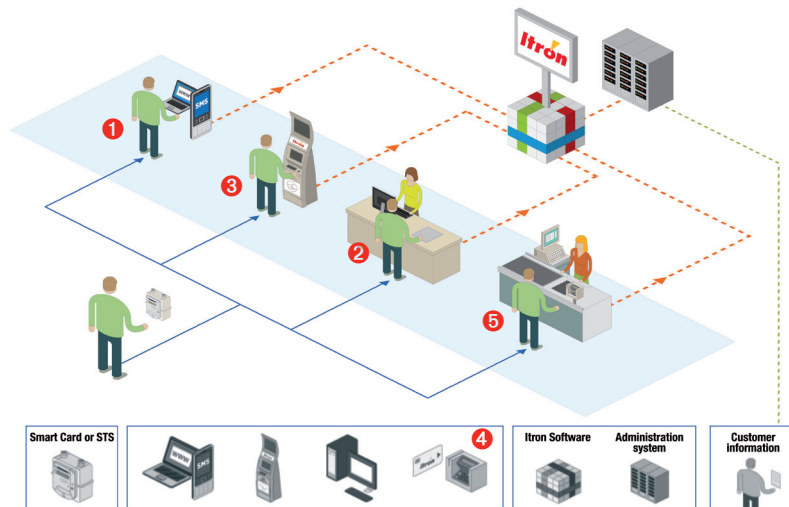
- » Pay as you go & Prepayment
- » Multi-channel vending
- » STS & Smart Card
- » Enhances revenue
- » Reduces fraud
- » Provides management & customer services (automatic readings, multi-tariff possibilities...)
- » Optimises gas network against bottled gas
- » End user controls consumption & debt

SYSTEM OVERVIEW

The Itron [Eclipse Enterprise Edition \(3E\)](#) supports both smart cards and Standard Transfer Specification (STS) token transactions, and is the only system existing today that can do both.

Our system uses the STS open standard for smart payment and for far reaching multi-channel vending networks such as:

- 1 Mobile telephone (via SMS) vending
- 2 At home through an Internet site
- 2 Scratch cards that can be bought in any shop
- 3 Cash or bank card based self-service kiosks or vending stations



- 4 Mobile points of sales / bookshelf point of sales for shops
 - 5 Interface with a "third party" vending network such as banks, post offices, petrol stations, shops
- These different channels provide utilities with the best choice for their end-user making payments as easy as possible for their customers.
- Eclipse Enterprise Edition is scalable from 300 up to 5 million meters and supports two different ways to handle end-user payment:
- » Prepayment; the end-user has to pay up front for gas consumption,
 - » Pay as you go (soft prepayment); the end-user consumes gas as with a regular credit meter but after a certain time or volume used is forced to pay otherwise the meter will close down.
- Multi-language, the system will help to collect meter reading data, outstanding debts or different charges with unlimited tariff possibilities. Tariffs can be updated on a daily basis making it very flexible for utilities to manage. Its data logging capabilities enable utilities to detect and minimize tampering and fraud on the meter side and on the system side smart tools are used to analyse consumption profiles.

ACE ECLIPSE REVENUE COLLECTOR

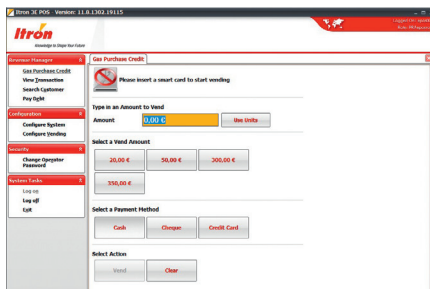
The ACE Eclipse Revenue Collector system, part of the Eclipse Enterprise Edition, is a true online vending, customer, meter and location management system. The full Service Oriented Architecture provides a graphical user interface through a standard web browser, over a host of communication channels.

Benefits

- » STS keypad and magnetic compliant system, preventing supplier lock-in
- » Comprehensive meter, revenue, customer and system management software, ensuring data integrity
- » Credit vending over existing channels (eg cellular phone, Internet or via GPRS), providing reduced/ manageable software footprint
- » Powerful, flexible tariff engine manages complex tariff structures, fixed charges and debt collection at point of sale
- » Run-time customisable token templates enable endless changes to information printed on tokens

Features

- » Online customer, location and meter administration interface, using web browser
- » Run on Oracle database
- » Fully scalable and flexible architecture, capable of high transaction volumes
- » Real time Online vending and administration via GPRS (or any TCP/IP carrier)
- » Optimal reliability, security and data integrity



ECLIPSE EXTENDED VENDING GATEWAY (EVG)

The Eclipse Extended Vending Gateway (EVG) is an independently managed transaction platform, that allows for the activation of a multitude of vending and distribution channels. The gateway is built on platform independent technology and optimised for high volume vending, merchant management, administration of complex commission structures and banking standard security.

The Eclipse EVG is an integrated solution that allows it to be plugged into the Eclipse Vending System. This allows for the expansion of vending and distribution channels of the vending system.

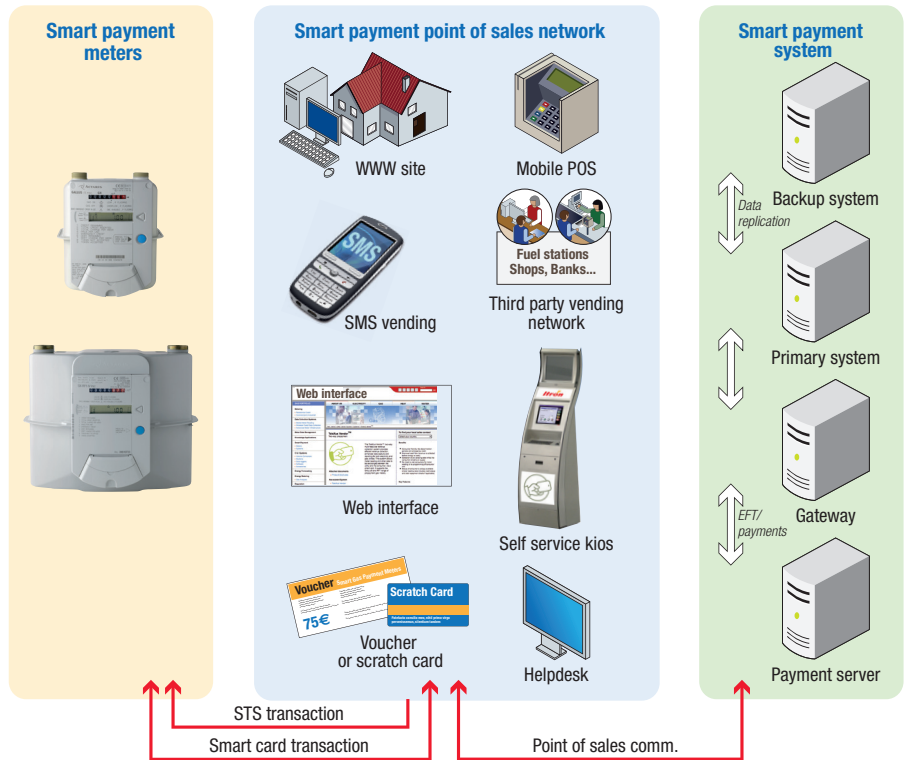
Eclipse EVG is already integrated with various other payment platforms and brings a true transaction switch to the overall payment architecture.

Benefits

- » Platform independent
- » High volume transaction switching
- » Web-based administration
- » Merchant management - credit, commission
- » Can easily be integrated with other systems

Features

- » Terminal and PC-based Point of Sale (PoS)
- » Voucher redemption and management
- » Cell phone vending - merchant & consumer
- » Consumer web site for vending
- » EFT (Electronic funds transfer)
- » Bill payments
- » Airtime sales for prepaid cell phones
- » Custom integration with other services and payment gateways



Our company is the world's leading provider of smart metering, data collection and utility software systems, with over 8,000 utilities worldwide relying on our technology to optimize the delivery and use of energy and water.

To realize your smarter energy and water future, start here: www.itron.com

For more information, contact your local sales representative or agency:

ITRON GmbH

Hardeckstraße 2
D-76185 Karlsruhe
Germany

Phone: +49-721 5981 0

Fax: +49-721 5981 189